

## Dene pastures

Incised denes and steeply sloping bluffs of improved or semi-improved pasture or rough grazing. Steeply sloping pastures are often difficult to manage or improve agriculturally and tend to be more diverse than the surrounding farmland. Tree cover is very variable. Hedgerow oak and ash are locally common. Steeper slopes may support areas of bracken, or scrub of hawthorn or gorse.

### Subtypes

#### **Old enclosure.**

Areas of early, often piecemeal, enclosure. Field patterns may be irregular or sub-regular and tend to reflect the underlying topography. Boundaries are typically hedgerows.

#### **Open heath.**

Areas of open, heathy pasture, with bracken and gorse.

#### **Reclaimed land.**

Areas of C20th enclosure following the restoration of mineral workings or the reclamation of derelict land. Field patterns tend to be regular. Boundaries may be hedges or fences and are lacking in mature hedgerow trees.

#### **Surveyor enclosed.**

Areas of late, 18<sup>th</sup> or 19<sup>th</sup> century enclosure. Field patterns are regular grids of hedges or walls which often ignore the underlying topography.

## Disturbed land

A variable type made up largely of abandoned mineral workings and railway lines.

### Subtypes

#### **Old clay pits & gravel workings**

Abandoned clay pits and gravel workings. A variable type but generally comprising ponds or lakes formed from flooded extraction areas surrounded by areas of disturbed ground, rough grassland or secondary woodland. Water bodies tend to be relatively deep and steep-sided with only narrow fringes of marginal vegetation (often reedbed). Secondary woodland and scrub colonising areas of disturbed ground is dominated by pioneer species like birch, alder and goat or grey willow.

#### **Old colliery workings**

Abandoned colliery workings. A variable type but often including areas of bare colliery wastes, rough grassland and scrub or secondary woodland. Structures like coal tipplers, coke ovens, waggonways and derelict buildings survive in places. Acidic colliery spoils often support diverse acid grasslands or heath and secondary woodland or scrub of birch, alder, aspen, hawthorn, gorse and goat willow.

#### **Old railway**

Abandoned railway lines survive as narrow linear features running through other landscapes. Most are made up of alternating cuttings and embankments. Many structures survive along their routes including bridges and viaducts, culverts, tipplers and station platforms. Some associated buildings like station houses and railway cottages have been converted to other uses. Most abandoned lines have been colonised by natural regeneration and support a diverse grassland and woodland flora which reflects the range of naturally occurring or imported

materials found in cuttings and embankments. Pioneer or ruderal species are particularly characteristic. Many old railway lines have been adopted as recreational multi-user routes.

**Old sandstone quarry.**

Abandoned sandstone quarry. Typical elements include extraction faces, spoil mounds and haul roads, softened by varying degrees of natural regeneration. Some quarries contain small ponds or larger areas of standing water. Quarry faces are horizontally bedded Carboniferous Sandstone varying in colour from buff to grey. Base-poor sandstone wastes and overburdens often support an acid-loving flora and are typically colonised by pioneer tree and shrub species like birch, alder, goat willow, hawthorn, gorse, broom and dog rose.

**Floodplain farmland: arable**

Low lying arable farmland on the fertile alluvial soils of the flat 'haughs' of the river floodplains. Fields tend to be large and bounded by hedges or fences, and may be subject to seasonal flooding or protected by artificial levees.

**Subtype**

**Old Enclosure.**

Areas of early, often piecemeal, enclosure. Field patterns are generally sub-regular and bounded by hedges with occasional hedgerow trees. Smaller fields have often been amalgamated to create large irregular parcels.

**Surveyor Enclosed.**

Areas of late, 18<sup>th</sup> or 19<sup>th</sup> century enclosure, usually piecemeal rather than part of larger parliamentary enclosure systems. The relatively small scale of the floodplains, and the loss of boundaries in areas of field amalgamation, means that the regular patterns typical of this period of enclosure rarely occur. Field boundaries are straight but otherwise the subtype differs little from the Old enclosure subtype.

**Floodplain farmland: pasture**

Low lying pastoral farmland on the flat 'haughs' of the river floodplains including both productive improved pasture and poorly drained or seasonally flooded, wet rushy pasture. Pastures may border directly onto the river or be separated from it by narrow riparian woodlands or fenced, often tree lined, river banks. In places floodplain pastures contain meandering minor watercourses and oxbow lakes, or relics of watermills and associated features. Pastures are generally divided by hedgerows, but in areas subject to regular flooding and more dynamic, shifting watercourses the floodplain may remain open.

**Subtype**

**Modern field system.**

C20th field system – usually a rationalisation of earlier enclosures. Field patterns tend to be regular. Boundaries may be hedges or fences and are usually lacking in mature hedgerow trees.

**Old Enclosure.**

Areas of early, often piecemeal, enclosure. Field patterns are generally sub-regular and bounded by hedges with occasional hedgerow trees.

**Parkland.**

Areas of ornamental parkland on the floodplains haughs characterised by the presence of parkland features such as copses and parkland trees. In some areas only a small number of relic features survive.

**Reclaimed Land.**

Areas of C20th enclosure following the restoration of mineral workings. Field patterns tend to be regular. Boundaries may be hedges or fences and are lacking in mature hedgerow trees. The landform may have an engineered character.

#### **Surveyor Enclosed.**

Areas of late, 18<sup>th</sup> or 19<sup>th</sup> century enclosure. The relatively small scale of the floodplains means that the regular patterns typical of this period of enclosure rarely occur. Field boundaries are straight but otherwise the subtype differs little from the Old enclosure subtype.

### **Heaths and fells**

Areas of lowland and mid-altitude heath and open fell. This very variable type includes both small commons and stunted pastures, areas of parliamentary enclosure in the upland fringes which have reverted to heath, and fragments of heathland vegetation that have survived elsewhere or regenerated naturally on disturbed land.

### **Subtype**

#### **Heath.**

Vegetation dominated by shrub-heath, or mosaic of heath and acid grassland

#### **Reclaimed fell.**

Heath restored following mineral extraction. Largely dominated by species poor acid grassland.

### **Infrastructure**

A variable local type covering a range of different forms of infrastructure.

### **Subtypes**

#### **Highway**

Only major roads are mapped and only where the scale of development is significant. The Highway subtype therefore covers larger scale cuttings, embankments and interchanges.

#### **Landfill**

Active landfill or other waste management facilities. Most feature voids – usually left from prior mineral extraction – currently being infilled. Tipping activities and litter trap fencing may be prominent.

#### **Military**

A variable type consisting of military installations such as active, dormant or abandoned ordnance dumps and firing ranges.

#### **Railway**

Only major railways are mapped and only where the scale of development is significant. The Railway subtype therefore covers larger scale cuttings, embankments and sidings.

#### **Substation**

Electricity substation. Usually associated with large numbers of overhead transmission lines. Only larger complexes are mapped.

#### **Water treatment works**

Sewerage or water treatment works. Only features in rural or urban fringe situations are mapped; others are

subsumed within the Urban type. Treatment works are typically made up of large concrete reservoirs, water tanks, filtration beds, lagoons, and ancillary buildings. Most are surrounded by security fences.

## Lakes and ponds

A variable type covering a range of natural and man made water bodies.

### Subtypes

#### **Flooded clay pits & gravel workings**

The water bodies of abandoned or restored clay pits, sand and gravel working. Abandoned features tend to have an irregular form with steep bank sides and fairly deep water, surrounded by areas of semi-natural vegetation, rank grassland, secondary woodland and scrub made up of species such as willows, alder and downy birch. Restored water bodies have a more designed form with shallower margins.

#### **Ornamental lake**

Ornamental lakes of parklands and recreation grounds. Only larger features are mapped. Many similar features may be found within the Parkland and Parks and Recreation grounds local types. They typically have a designed but 'naturalistic' shape and may be planted with ornamental or native species depending on their context.

## Lowland woods

A variable type covering the diverse woodlands of lowland valleys, plains and plateaux.

### Subtypes

#### **Ancient woods.**

Ancient semi-natural woodlands. On the base-poor glacial drift that covers much of the lowlands the predominant woodland type is a lowland mixed broadleaved woodland with Common or Sessile Oak the major canopy species (NVC W10). Some Oak-birch woodlands (NVC W16) occur on less fertile sandy soils, and stands of Alder (NVCW5) woodland are found on flushed slopes or wet ground. Some woodlands show signs of having been managed as coppice in the past.

#### **Secondary woods and wood pasture**

Secondary semi-natural woodlands dominated by pioneer species (Birch, Ash, Sycamore, Hawthorn, Sallows, Gorse) that have colonised areas of disturbed land such as railway embankments and colliery tips, or unmanaged pasture or heath.

#### **Plantation.**

Planted woodlands of very variable character, including hardwood plantations of species such as Beech, Oak and Sycamore often planted as part of parkland or estate landscapes, and plantations dominated by softwoods.

## Lowland woods: denes, bluffs & river terraces

Woodlands of incised denes and steeply sloping valley-side or escarpment bluffs. Woodland plant communities are diverse and reflect the range of underlying parent rocks and drift materials that occur – often within a single wood.

### Subtypes

#### **Ancient woods.**

Ancient semi-natural woodlands. On the base-poor glacial drift into which many lowland denes are incised the predominant woodland type is a lowland mixed broadleaved woodland, with Common or Sessile Oak the major

canopy species (NVC W10). Similar woodlands occur on river terrace gravels and rocky gorges on carboniferous sandstones and shales. On poorer soils, and particularly in the west, these woodlands may be transitional in character with upland Oak woods (NVC W11). On the more acidic strata of the coal measures they often occur along-side Oak-birch (NVC 16) communities. On the limestone escarpment, and in the coastal dunes where limestones are exposed, lowland Ash woodland communities (NVC W8) are found, with occasional stands of pure Yew (W13) on the thinnest soils. Ash communities transitional in character with upland Ash woods (NVC W9) are found where carboniferous limestones are exposed in the west. Stands of Alder-Ash woodland (NVC W7) and Alder carr (NVC W5) occur on flushed slopes or waterlogged ground. Some woodlands show signs of having been managed as coppice in the past. Woods on the coal measures often contains relics of drift mining – pit-falls, waggonways and small spoil mounds. Some dune woods also contain relics of small scale quarrying activities.

#### **Modified ancient woods.**

This subtype includes re-planted ancient woodland sites and ancient woods that have been heavily modified by the introduction of commercial or exotic species, or species not native to the locality.

#### **Secondary woods and wood pastures.**

Secondary semi-natural woodlands dominated by pioneer species (Birch, Ash, Sycamore, Hawthorn, Sallows, Gorse) that have colonised areas of disturbed land such as railway embankments and colliery tips, or unmanaged pasture or heath.

#### **Old wood pastures.**

Ancient woodlands that have long been managed as wood pasture. A mosaic of open woodland, scrub and neutral grassland containing ancient and veteran trees.

#### **Plantation.**

Planted woodlands of very variable character, including hardwood plantations of species such as Beech, Oak and Sycamore often planted as part of parkland or estate landscapes, and plantations dominated by softwoods – some planted historically for pit-wood, others under taxation incentives in the late C20th or as part of the reclamation of derelict land and opencast coal workings

### **Lowland woods: floodplain & riverside**

Narrow corridors of woodland on riverbanks and river terraces, usually semi-natural in character and made up of native species, particularly Oak, Ash, Alder, Aspen, Birch and Willows. Many are ancient woods; others are secondary semi-natural woods that have followed the shifting course of the river.

### **Subtypes**

#### **Ancient woods.**

Ancient semi-natural woodlands. The predominant woodland type on drier ground is a lowland mixed broadleaved woodland with Common or Sessile Oak the major canopy species (NVC W10), with Alder-Ash (NVC W7) and Alder (NVC W6, W5) woodlands on wetter ground and washlands.

#### **Modified ancient woods.**

This subtype includes re-planted ancient woodland sites and ancient woods that have been heavily modified by the introduction of commercial or exotic species, or species not native to the locality.

#### **Secondary woods & wood pastures**

Secondary semi-natural woodlands, often containing similar species to ancient woods, but which have naturally colonised the shifting riverbank environment and are therefore dominated more by pioneers like Alder, Aspen, Birches and Willows.

#### **Plantation.**

A variable subtype of planted woodlands including old broadleaved plantations, softwood plantations, poplar plantations and more recent new native woodlands on river floodplains and carrs.

### **Mineral working**

A diverse type made up of active or dormant mineral workings ranging from hard-rock quarries to opencast coal sites, gravel pits and clay workings. Typical common elements include extraction voids and faces, soil mounds, overburden and waste heaps, haul roads, buildings and processing plant.

#### **Subtypes**

##### **Clay pit**

Clay pits worked for brick-shales and fireclays, and usually associated with adjoining brickworks. Extraction areas tend to be deep voids with steeply sloping sides of grey clays, mudstones and sandstones. There are usually large un-vegetated materials stockpiles either within the void or on adjacent land. The neutral or base poor clays, overburdens and wastes may support areas of diverse acid or neutral grassland and secondary woodland or scrub of birch, alder, aspen, hawthorn, gorse and goat willow where they have been undisturbed.

### **Nurseries and Market gardens**

Commercial nurseries, garden centres and market gardens, typically including extensive areas of greenhouses, car parking and storage areas. Some include areas of intensive horticulture, growing trees, herbaceous plants or fruit bushes.

### **Parkland**

The designed landscapes of ornamental parks typically include formal gardens together with larger areas of open pastoral parkland. Veteran native and exotic trees are scattered across the park or arranged in formal avenues. Clumps of trees, copses and larger woodlands are deployed for their aesthetic effect. Other ornamental features – lakes, ponds, cascades and follies may be present. Buildings – gatehouses, lodges and farms – are typically designed in a formal style to compliment the main house. The park may be visually open, often with boundary ha-has to maintain an open character, or enclosed by boundary fences or hedges and particularly in areas away from the parkland core. The park as a whole is often bounded by a high mortared stone wall.

#### **Subtypes**

##### **Enclosed parkland arable.**

Enclosed ornamental farmland currently in arable use. Parkland trees may survive as isolated features within the crop. The parkland character often survives largely in the woodland pattern.

##### **Enclosed parkland pasture.**

Enclosed ornamental farmland currently under pasture. Field systems may date from earlier enclosures or may be contemporary with the layout of the park. The parkland character often survives largely in the woodland pattern although field or avenue trees may also be present.

##### **Golf course.**

Older parkland developed as a golf course. Parkland features survive along side familiar elements of the modern golf course – bunkers, greens, fairways, roughs and ponds – as well as new tree planting usually of a ‘parkland’ character.

**Open parkland arable.**

Open parkland currently in arable use. Few parkland features other than the larger woodland pattern and occasional isolated trees usually survive

**Open parkland pasture.**

Open pastoral parkland. grasslands may be improved or semi-improved and often contain relics of the medieval landscape including rig and furrow and building platforms. Veteran parkland trees – both native and exotic - are scattered across the parkland, sometimes in great numbers. Other parkland relics – avenues, ornamental water bodies, small copses, ha-has etc may be present.

**Ornamental gardens.**

Ornamental gardens are very diverse but often include walled vegetable gardens, bordered walks and formal parterres.

## Parks & Recreation Grounds

A varied type incorporating a large range of recreational landscapes.

### Subtypes

**Allotment gardens.**

Allotment gardens vary in character but are typically laid out in regular plots which may be open or surrounded by individual fences. Some allotments contain many buildings & structures – sheds, greenhouses, poultry houses, frames etc – often made out of reclaimed materials.

**Caravan sites.**

Permanent caravan sites, sometimes with touring pitches. Often located within areas of woodland. Most contain a permanent infrastructure of roadways and service buildings.

**Churchyards, cemeteries & crematoria.**

The designed amenity landscapes of churchyards, cemeteries and crematoria.

**Golf courses.**

Extensive areas of amenity grassland with bunkers, greens, fairways, roughs and ponds with individual trees, tree groups and copses in varying degrees of maturity. Some contain elements surviving from the previous landscape – veteran trees, hedgerows and woodlands, or fragments of heath.

**Monuments.**

Ancient monuments and their grounds - usually including areas of amenity grassland, car parks and other facilities.

**Playing fields & urban green space.**

Open spaces of amenity grassland including sports pitches and areas of informal public open space.

## River: middle reaches

The middle reaches of major rivers meandering across narrow floodplains or running through incised denes or larger gorges. Where they cross floodplains the river banks are fenced from the adjacent farmland which is occasionally protected by low artificial levees. The river banks are often lined with narrow Riverside woods.

## Subtypes

### **Oxbow lake.**

Oxbow lakes cut off from the main watercourse and usually heavily vegetated with emergent aquatic plants like Reedmace.

### **River.**

Rapidly flowing watercourses with alternating pools and riffles, shingle banks and occasional islands.

### **River bank.**

River banks fenced from adjacent pasture, or left unfenced from adjacent arable, support rough unmanaged grassland with native riverside species like Butterbur and, in places, introduced species like Himalayan Balsam, Giant Hogweed and Japanese Knotweed. Bank side trees - Crack Willow, White Willow, Purple Willow, Alder – are common. River banks may be engineered in places, occasionally with low flood-protection levees.

## River: lower reaches

The lower reaches of major rivers meandering across narrow floodplains, protected in places by low artificial levees. The river banks are often lined with trees or narrow Riverside woods.

## Subtypes

### **River.**

Generally sluggish and meandering watercourses. Below the tidal limit the river is flanked by mud banks exposed at low tide.

### **River bank.**

River banks fenced from adjacent pasture, or left unfenced from adjacent arable, support rough unmanaged grassland with native riverside species like Butterbur and, in places, introduced species like Himalayan Balsam, Giant Hogweed and Japanese Knotweed. Bank side trees - Crack Willow, White Willow, Purple Willow, Alder – are common. River banks may be engineered in places, occasionally with low flood-protection levees.

## Terrace farmland: open arable

Open, rolling or undulating arable farmland. Fields are often large and bounded by low clipped thorn hedges. Hedgerow trees are absent or infrequent.

## Subtypes

### **Old Enclosure.**

Areas of early, often piecemeal, enclosure. Field patterns are sub-regular but often disrupted by field amalgamations.

### **Reclaimed Land.**

Areas of C20th enclosure following the restoration of mineral workings. Field patterns are regular and geometric.

### **Surveyor Enclosed.**



Areas of late, 18<sup>th</sup> or 19<sup>th</sup> century enclosure. Field boundaries are straight and field patterns are regular grids, often disrupted by field amalgamations.

### Terrace farmland: open pasture

Open, rolling or undulating farmland of improved pasture. Fields are often large and bounded by low clipped thorn hedges or wire fences. Hedgerow trees are absent or infrequent.

#### Subtypes

##### **Modern field system.**

C20th field system – usually a rationalisation of earlier enclosures. Field patterns tend to be regular. Boundaries may be hedges or fences and are usually lacking in mature hedgerow trees.

##### **Old Enclosure.**

Areas of early, often piecemeal, enclosure. Field patterns are sub-regular but often disrupted by boundary loss.

##### **Reclaimed Land.**

Areas of C20th enclosure following the restoration of mineral workings. Field patterns are regular and geometric.

##### **Surveyor Enclosed.**

Areas of late, 18<sup>th</sup> or 19<sup>th</sup> century enclosure. Field boundaries are straight and field patterns are regular grids, often disrupted by boundary loss.

### Terrace farmland: pasture

Rolling or gently undulating farmland of improved pasture with some pockets of less improved pasture, often associated with areas of relic rig and furrow. Field systems are generally sub-regular enclosures of early post-medieval origins. Field boundaries are clipped or overgrown hedges, usually dominated by hawthorn, in which hedgerow Ash, Oak and Sycamore trees are common.

#### Subtypes

##### **Old Enclosure.**

The type.

##### **Surveyor Enclosed.**

Areas of 20th century enclosure. Field boundaries are straight and field patterns are regular grids of hedges with no trees. Relics of medieval rig & furrow are found locally.

### Terrace farmland: wooded arable

Rolling wooded arable farmland. Fields are bounded by low clipped hawthorn hedges. The pattern of woodland is variable though generally this type gets its wooded feel from the woods of denes and riverside bluffs it borders onto.

#### Subtypes

##### **Modern field system.**

C20th field system – usually a rationalisation of earlier enclosures. Field patterns tend to be regular. Boundaries may be hedges or fences and are usually lacking in mature hedgerow trees.

##### **Old Enclosure.**

Areas of early, often piecemeal, enclosure. Field patterns are sub-regular, locally disrupted by field amalgamations. There may be scattered hedgerow ash, oak or sycamore.

**Reclaimed Land.**

Areas of C20th enclosure following the restoration of mineral workings. Field patterns are regular and geometric. There may be small linear coniferous shelterbelts and field corner copses. There are no mature hedgerow trees.

**Surveyor Enclosed.**

Areas of late, 18<sup>th</sup> or 19<sup>th</sup> century enclosure. Field boundaries are straight and field patterns are regular grids, locally disrupted by field amalgamations. There are few hedgerow trees

### Terrace farmland: wooded estate arable

Rolling wooded arable estate farmland of the lowland valley terraces. Fields are bounded by trimmed hedges or estate fencing, or border onto woodlands. Small copses, spinneys and shelterbelts are common along with other elements of the estate landscape: designed farmsteads, lodges, gatehouses, mortared stone walls and entrance gates.

#### Subtypes

**Old Enclosure.**

Areas of early, often piecemeal, enclosure. Field patterns are sub-regular with scattered hedgerow ash, oak or sycamore.

**Reclaimed Land.**

Areas of C20th enclosure following the restoration of mineral workings. Field patterns are regular and geometric. There may be small linear coniferous shelterbelts and field corner copses. There are no mature hedgerow trees.

### Terrace farmland: wooded estate pasture

Rolling wooded pastoral estate farmland of the lowland valley terraces. Fields are bounded by trimmed hedges or estate fencing, or border onto woodlands. Small copses, spinneys and shelterbelts are common along with other elements of the estate landscape: designed farmsteads, lodges, gatehouses, mortared stone walls and entrance gates. Areas of older rig and furrow may survive in less improved pastures.

#### Subtypes

**Modern field system.**

C20th field system – usually a rationalisation of earlier enclosures. Field patterns tend to be regular. Boundaries may be hedges or fences and are usually lacking in mature hedgerow trees.

**Old Enclosure.**

Areas of early, often piecemeal, enclosure. Field patterns are generally sub-regular. Field boundaries are hedgerows, usually dominated by hawthorn. Mature hedgerow or parkland trees occur locally

**Surveyor Enclosed.**

Areas of late, 18th or 19th century enclosure. Field boundaries are straight and field patterns are regular. Mature hedgerow or parkland trees occur locally.

**Reclaimed Land.**

Areas restored following C20th opencast coal mining. Field patterns are regular and geometric. Fields are

bounded by young hedges or wire fences. There may be small linear coniferous shelterbelts and field corner copses. There are no mature hedgerow trees.

### Terrace farmland: wooded pasture

Rolling wooded farmland of improved pasture with occasional older semi-improved pasture, often associated with areas of relic rig and furrow. Fields are bounded by hawthorn hedges – generally trimmed but locally tall and overgrown. The pattern of woodland is variable though generally this type gets its wooded feel from the woods of denes and riverside bluffs it borders onto.

### Subtypes

#### Old Enclosure.

Areas of early, often piecemeal, enclosure. Field patterns are sub-regular, locally disrupted by boundary loss. There may be scattered hedgerow ash, oak or sycamore and areas of relic rig and furrow.

#### Reclaimed Land.

Areas of C20th enclosure following the restoration of mineral workings. Field patterns are regular and geometric. There may be small linear coniferous shelterbelts and field corner copses. There are no mature hedgerow trees.

#### Surveyor Enclosed.

Areas of late, 18<sup>th</sup> or 19<sup>th</sup> century enclosure. Field boundaries are straight and field patterns are regular grids, locally disrupted by boundary loss. Hedgerow trees are scarce.

### Urban

A variable type which covers a broad range of urban development - housing, industry, retail and commerce, community facilities and public open space. The landscape character assessment does not identify variations in character within the urban landscape at any level of detail but does identify a small number of basic subtypes.

### Subtypes

#### Industrial and retail estates

Industrial and retail estates typically have a planned layout, often with significant areas of structure planting and amenity planting. Buildings are generally large in scale and industrial in character. There may be significant areas of open operation land or vacant land awaiting development. Smaller areas of land in industrial or commercial use are generally subsumed within the Urban subtype.

#### Gypsy and traveller site

Small developments, often in rural or urban-fringe locations, with a planned layout of roads, hard-standings and utility blocks.

#### Institutions

A variable subtype including schools, hospitals, colleges and other institutions in rural situations. Large individual buildings or building complexes set in areas of open green space and amenity planting.

#### Urban

The type. Urban land including built development, gardens and public open spaces together with areas of recreational land (unless separately identified as **Parks & recreation grounds local landscape type**) and industrial/ commercial land (unless separately identified as **Industrial and retail estates** subtype).

### Valley farmland: open arable

Open arable farmland on the heavy clay soils of the valley landscapes of the exposed coal measures. Fields are often large and bounded by low clipped thorn hedges, or, more rarely, dry stone walls. Hedgerow trees are absent or infrequent.

#### Subtypes

##### **Old Enclosure.**

Areas of early, often piecemeal, enclosure. Field patterns are generally sub-regular but disrupted in places by field amalgamations.

##### **Reclaimed Land.**

Areas of C20th enclosure following the restoration of mineral workings. Field patterns are regular and geometric.

##### **Surveyor Enclosed.**

Areas of late, 18<sup>th</sup> or 19<sup>th</sup> century enclosure. Field boundaries are straight and field patterns are regular grids, disrupted in places by field amalgamations.

### Valley farmland: open pasture

Open pastoral farmland of the coalfield valleys. Large fields of improved pasture with some pockets of semi-improved pasture or rough grazing, occasionally with patchy gorse or hawthorn scrub. Field boundaries are typically species poor hawthorn hedges, or a mixture of hedges and fences. Hedges are often sparse and overgrown or grazed through and supplemented by wire fences. Hedgerow trees are absent or infrequent. Patches of rigg & furrow survive from medieval agriculture and later periods of improvement. Small field ponds, some being 'subsidence flashes' caused by underground workings, are fairly common.

#### Subtypes

##### **Old Enclosure.**

Areas of early, often piecemeal, enclosure. Field systems are generally sub-regular although the pattern has often been disrupted by the removal or decline of hedgerows.

##### **Surveyor Enclosed.**

Areas of late, 18<sup>th</sup> or 19<sup>th</sup> century enclosure. Field boundaries are straight and field systems regular although the pattern has often been disrupted by the removal or decline of hedgerows.

### Valley farmland: wooded arable

Wooded arable farmland of the valley landscapes of the exposed coal measures. Fields are bounded by low hawthorn hedges or border onto woodlands. The pattern of woodland is very variable, being typically a combination of small ancient broadleaved woodlands in narrow denes and along watercourses, and larger blocky plantation of mixed or coniferous species.

#### Subtypes

##### **Old Enclosure.**

Areas of early, often piecemeal, enclosure. Field patterns are generally sub-regular but disrupted in places by field amalgamations. Field boundaries are trimmed hedgerows, usually dominated by hawthorn but sometimes more diverse, with scattered hedgerow ash and oak.

### **Reclaimed Land.**

Areas restored following opencast coal mining. Field patterns are regular and geometric. Fields are bounded by young hedges or wire fences with few hedgerow trees.

### **Surveyor Enclosed.**

Areas of late, 18<sup>th</sup> or 19<sup>th</sup> century enclosure. Field boundaries are straight and field patterns are regular grids of trimmed hawthorn hedges, occasionally walls, disrupted in places by field amalgamations. Hedgerow trees are scarce.

### **Valley farmland: wooded estate arable**

Wooded arable estate farmland of the valley landscapes of the exposed coal measures. Fields are bounded by trimmed hedges or estate fencing, or border onto woodlands. Small copses, spinneys and shelterbelts are common along with other elements of the estate landscape: designed farmsteads, lodges, gatehouses, mortared stone walls and entrance gates.

### **Subtypes**

#### **Old Enclosure.**

Areas of early, often piecemeal, enclosure. Field patterns are generally sub-regular but disrupted in places by field amalgamations. Field boundaries are trimmed hedgerows, usually dominated by hawthorn but sometimes more diverse, with scattered hedgerow ash and oak.

### **Valley farmland: wooded estate pasture**

Wooded pastoral estate farmland of the valley landscapes of the exposed coal measures. Fields are bounded by trimmed hedges or estate fencing, or border onto woodlands. Small copses, spinneys and shelterbelts are common along with other elements of the estate landscape: designed farmsteads, lodges, gatehouses, mortared stone walls and entrance gates. Areas of older rig and furrow may survive in less improved pastures.

### **Subtypes**

#### **Old Enclosure.**

Areas of early, often piecemeal, enclosure. Field patterns are generally sub-regular. Field boundaries are hedgerows, usually dominated by hawthorn. Mature hedgerow or parkland trees occur locally

### **Reclaimed Land.**

Areas restored following opencast coal mining. Field patterns are regular and geometric. Fields are bounded by young hedges or wire fences with few hedgerow trees.

### **Valley farmland: wooded pasture**

Wooded pastoral farmland of the valley landscapes of the exposed coal measures. Fields are bounded by hedges, often tall and overgrown, or dry stone walls. The pattern of woodland is very variable, being typically a combination of small ancient broadleaved woodlands in narrow denes and along watercourses, and larger blocky plantation of mixed or coniferous species.

### **Subtypes**

#### **Modern field system.**

C20th field system – usually a rationalisation of earlier enclosures. Field patterns tend to be regular. Boundaries may be hedges or fences and are usually lacking in mature hedgerow trees.

**Old Enclosure.**

Areas of early, often piecemeal, enclosure. Field patterns are generally sub-regular. Field boundaries are hedgerows, usually dominated by hawthorn, or dry stone walls with scattered (locally abundant) hedgerow oak and ash. Areas of rig and furrow may survive in less improved pastures.

**Surveyor Enclosed.**

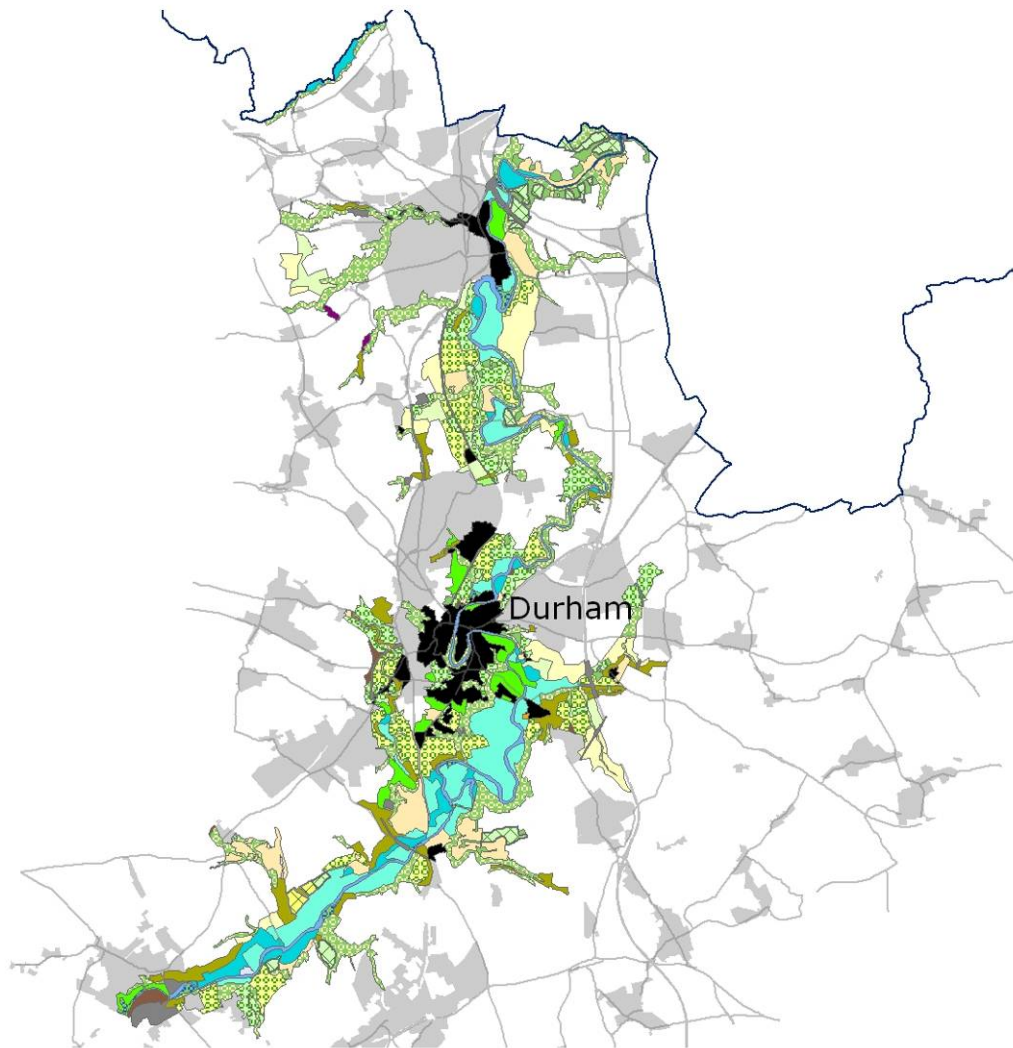
Areas of late, 18th or 19th century enclosure. Field boundaries are straight and field patterns are regular grids of hedgerows or walls with occasional hedgerow trees.

**Reclaimed Land.**

Areas restored following opencast coal mining. Field patterns are regular and geometric. Fields are bounded by young hedges, wire fences or new dry stone walls with few hedgerow trees. Small shelterbelts and copses, often of softwoods, are common.

# Local Landscape Types

## Incised Lowlands

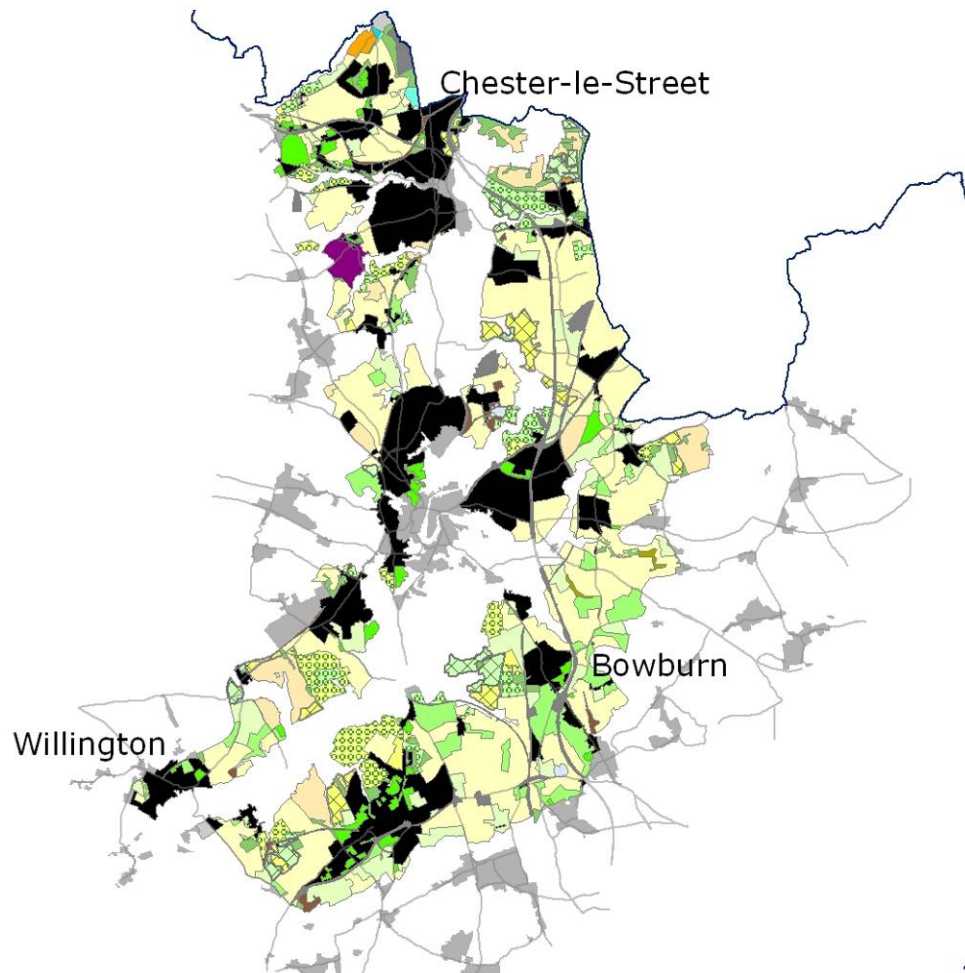


- |                               |  |
|-------------------------------|--|
| County Boundary               | Lowland woods: floodplain & riverside  |
| Settlements                   | Nurseries & market gardens             |
| Roads                         | Parkland                               |
| Urban                         | Parks & recreation grounds             |
| Infrastructure                | River: lower reaches                   |
| Mineral working               | River: middle reaches                  |
| Disturbed land                | Valley farmland: open arable           |
| Dene pastures                 | Valley farmland: open pasture          |
| Floodplain farmland: arable   | Valley farmland: pasture               |
| Floodplain farmland: pasture  | Valley farmland: wooded arable         |
| Heaths & fells                | Valley farmland: wooded estate arable  |
| Lakes & ponds                 | Valley farmland: wooded estate pasture |
| Lowland woods                 | Valley farmland: wooded pasture        |
| Lowland woods: denes & bluffs |  |

Crown Copyright. All rights reserved. Durham County Council LA 100019779 2008

# Local Landscape Types

## Lowland Valley Terraces



- |                               |   |
|-------------------------------|---|
| County Boundary               | Nurseries & market gardens              |
| Roads                         | Parkland                                |
| Settlements                   | Parks & recreation grounds              |
| Urban                         | Terrace farmland: arable                |
| Floodplain farmland: pasture  | Terrace farmland: open arable           |
| Floodplain farmland: arable   | Terrace farmland: open pasture          |
| Infrastructure                | Terrace farmland: pasture               |
| Disturbed land                | Terrace farmland: walled pasture        |
| Mineral working               | Terrace farmland: wooded pasture        |
| Dene pastures                 | Terrace farmland: wooded arable         |
| Heaths & fells                | Terrace farmland: wooded estate arable  |
| Lakes & ponds                 | Terrace farmland: wooded estate pasture |
| Lowland woods                 | Terrace farmland: wooded pasture        |
| Lowland woods: denes & bluffs |   |

Crown Copyright. All rights reserved. Durham County Council LA 100019779 2008