

The Landscape Classification

The County Durham Landscape Character Assessment identifies landscape types and character areas at three different levels - the regional, the sub-regional and the local.

Regional	County Character Areas	
Sub-regional	Broad Landscape Types Broad Character Areas	See Table 1
Local	Local Landscape Types Local Sub-types	See Table 2

County Character Areas.

County Character Areas are based on Natural England's Countryside Character Areas. There are 6 Countryside Character Areas in County Durham, all of which extend beyond its administrative boundaries. County Character Areas are effectively those parts of Countryside Character Areas lying within the County. The boundaries of County Character Areas are more precisely drawn than those of Countryside Character Areas as they are based on a more detailed level of assessment. In reality the boundaries between these broad landscape zones are often gradual and progressive and difficult to identify precisely on the ground. The character of County Character Areas may differ in some ways from that of the larger Countryside Character Areas to which they belong. The descriptions of County Character Areas given here in the Landscape Assessment may therefore be slightly different to the descriptions given in other publications for Countryside Character Areas.

Broad Landscape Types and Character Areas

Broad Landscape Types are landscapes with similar patterns of geology, soils, vegetation, land use, settlement and field patterns identified at a broad sub-regional level. As with County Character Areas, the boundaries between Broad Landscape Types are not always precise, as the change between one landscape and another can be gradual and progressive. Landscapes belonging to a particular type – for example an 'Upper Dale' landscape - may be found in many different places.

Broad Character areas are unique areas - geographically discrete examples of a particular landscape type. For example *Upper Teesdale* is a character area belonging to the *Upper Dale* type. In some cases character areas are physically separate landscapes – as they are in the Upper Dales and the Coalfield Valleys – in other cases larger tracts of landscape have been broken down into a number of character areas where this was the best way of accounting for variations in character within the broad type.

Local landscape Types and sub-types

Local Landscape Types are tracts of land which share similar combinations of soils, land use, field boundaries and tree and woodland cover. Some Local Landscape Types may be found in only one Broad Landscape Type; others may be found across a wider range of landscapes.

Local Landscape Sub-types are used to identify variations within a local landscape type. For example landscapes belonging to the type 'Valley farmland: pasture' may include some examples with early post-medieval field systems (subtype: old enclosure) and some with parliamentary enclosure field systems (subtype: surveyor-enclosed). Local subtypes are not listed separately here but are described within the sections dealing with local landscape types.

LANDSCAPE CHARACTER
THE LANDSCAPE CLASSIFICATION

TABLE 1: REGIONAL AND SUB-REGIONAL LANDSCAPES

County Character Area	Broad Landscape Type	Broad Character Area
North Pennines	Moorland Ridges & Summits	Barningham, Hope & Scargill Moors Bollilhope Common Holwick & Cronkley Langdon, Newbiggin & Middleton Commons Lune Forest & Mickle Fell Middlehope Fell, Redburn, Wolfcleugh & Lintzgarth Muggleswick & Waskerley Nookton Fell Pikestone & Woodland Fells Stanhope Common & Wolsingham Moor West Common & Cow Green
	Moorland Plateau	Cotherstone Moor Mickleton & Hunderthwaite Moors Stainmore
	Moorland Fringe	Deepdale Moorland Fringe Derwentdale Moorland Fringe Hamsterley Woodland, Langleydale & Marwood Fringes Lunedale Moorland Fringe Romaldkirk Moor Slieghtholme & Greta Moorland Fringes Teesdale Moorland Fringes Scargill & Barnigham Fringe Waskerley & Tunstall Fringe Weardale Moorland Fringe
	Upper Dale	Upper Baldersdale Upper Derwentdale Upper Greta Valley Upper Lunedale Upper Rookhope Upper Teesdale Upper Weardale
	Middle Dale	Baldersdale Langleydale & Marwood Lunedale Mid Greta Valley Mid Derwentdale Mid Teesdale Mid Weardale Rookhope Tunstall
	Lower Dale	Lower Derwent Lower Greta Lower Teesdale Lower Weardale
	Dales Fringe	Gritstone Upland Fringe
Gritstone Vale		Barnigham, Brignall & Rokeby Boldron & Lartington Newsham & Cleatlam Raby & Streatlam Bolam, Hilton & Wackerfield

TABLE 1: REGIONAL AND SUB-REGIONAL LANDSCAPES

West Durham Coalfield	Coalfield Upland Fringe	Browney uplands Central Coalfield Uplands Northern Coalfield Uplands Upper Bedburn & Harthope Valleys Upper Gaunless Valley Upper Linburn Valley
	Coalfield Valley Floodplain	Derwent Floodplain Gaunless Floodplain Wear Floodplain
	Coalfield Valley	Beamish & Causey Burn Valleys Beechburn Valley Browney Valley Cong Burn Valley Deerness & Hedleyhope Valleys Derwent Valley Findon Hill & South Burn Valley Hummerbeck Valley Kyo Burn Valley Lower Gaunless Valley Lower Linburn Valley Middle Wear Valley Stanley Burn Valley Stockley Beck Valley Upper Wear & Lower Bedburn valleys
Wear Lowlands	Lowland Valley Terraces	Eastern Valley Terraces Western Valley Terraces
	Incised Lowland Valley	Congburn, Southburn & Blackdene Lower Browney Valley Northern Wear Valley Southern Wear Valley Team Valley
East Durham Limestone Plateau	Limestone Escarpment	The Limestone Escarpment Ridge The Northern Limestone Escarpment The Southern Limestone Escarpment
	Clay Plateau	The Central East Durham Plateau
	Coastal Limestone Plateau	The East Durham Coastal Plateau The Hart Coastal Plain
	Limestone Coast	The Durham Coast
Tees Plain	Lowland Vale	Northern Tees Vale: Staindrop & Ingleton Southern Tees Vale: Hutton Magna
	Lowland Carrs	Bradbury, Preston & Mordon Carrs Nunstainton, Mainsforth & Middleham Carrs
	Lowland River Terraces	The River Tees
	Lowland Plain	Butterwick & Shotton Embleton Sedgefield, Windlestone & Aycliffe Sheraton

LANDSCAPE CHARACTER
THE LANDSCAPE CLASSIFICATION
TABLE 2: LOCAL LANDSCAPES TYPES

County Character Area	Local Landscape Type
NORTH PENNINES	Crags, scars and stone bands
	Dale floor farmland: pasture and meadow
	Dale floor farmland: walled pasture and meadow
	Dale reservoir
	Daleside farmland: pasture and meadow
	Daleside farmland: walled pasture and meadow
	Daleside farmland: wooded estate pasture
	Daleside farmland: wooded pasture and meadow
	Daleside farmland: wooded walled pasture and meadow
	Disturbed land
	Gill pastures
	Infrastructure
	Lakes & ponds
	Low moor
	Mineral working
	Moorland edge
	Moorland gill
	Moorland plateau
	Moorland plateau summit
	Moorland reservoir
	Moorland ridge
	Moorland slope
	Moorland summit
	Outlying moor
	Parkland
	Parks and recreation grounds
	River: upper reaches
	Steep daleside bluff: pasture
	Top land, allotments and intakes: open pasture
	Top land, allotments and intakes: wooded pasture
	Top land, allotments and intakes: open rough grazing
	Top land, allotments and intakes: wooded rough grazing
	Upland woods
	Upland woods: forest
Upland woods: gills and gorges	
Upland woods: juniper	
Upland woods: riverside	
Urban	
DALES FRINGE	Dene pastures
	Disturbed land
	Floodplain farmland: pasture
	High plateau farmland: open pasture
	High plateau farmland: open walled pasture
	High ridge and valley farmland: open pasture
	High ridge and valley farmland: walled pasture
	High ridge and valley farmland: wooded estate arable
	High ridge and valley farmland: wooded estate pasture

LANDSCAPE CHARACTER
THE LANDSCAPE CLASSIFICATION
TABLE 2: LOCAL LANDSCAPES TYPES

	High ridge and valley farmland: wooded pasture
	Infrastructure
	Lowland reservoir
	Lowland woods
	Lowland woods: floodplain & riverside
	Lowland woods: denes, bluffs & river terraces
	Mineral working
	Parkland
	Parks and recreation grounds
	River: middle reaches
	Upland woods
	Upland woods: denes & bluffs
	Urban
	Vale farmland: arable
	Vale farmland: pasture
	Vale farmland: walled arable
	Vale farmland: walled pasture
	Vale farmland: wooded arable
	Vale farmland: wooded estate arable
	Vale farmland: wooded estate pasture
	Vale farmland: wooded pasture
WEST DURHAM COALFIELD	Dene pastures
	Disturbed land
	Floodplain farmland: arable
	Floodplain farmland: pasture
	Heaths and fells
	High ridge and valley farmland: open arable
	High ridge and valley farmland: open pasture
	High ridge and valley farmland: pasture
	High ridge and valley farmland: walled arable
	High ridge and valley farmland: walled pasture
	High ridge and valley farmland: wooded arable
	High ridge and valley farmland: wooded pasture
	Infrastructure
	Lakes & ponds
	Lowland woods
	Lowland woods: denes & bluffs
	Lowland woods: floodplain & riverside
	Nurseries & market gardens
	Mineral working
	Parkland
	Parks and recreation grounds
	River: middle reaches
	Upland woods
	Upland woods: denes & bluffs
	Upland woods: forest
	Urban
	Valley farmland: arable
	Valley farmland: open arable
	Valley farmland: open pasture
	Valley farmland: pasture
	Valley farmland: wooded arable

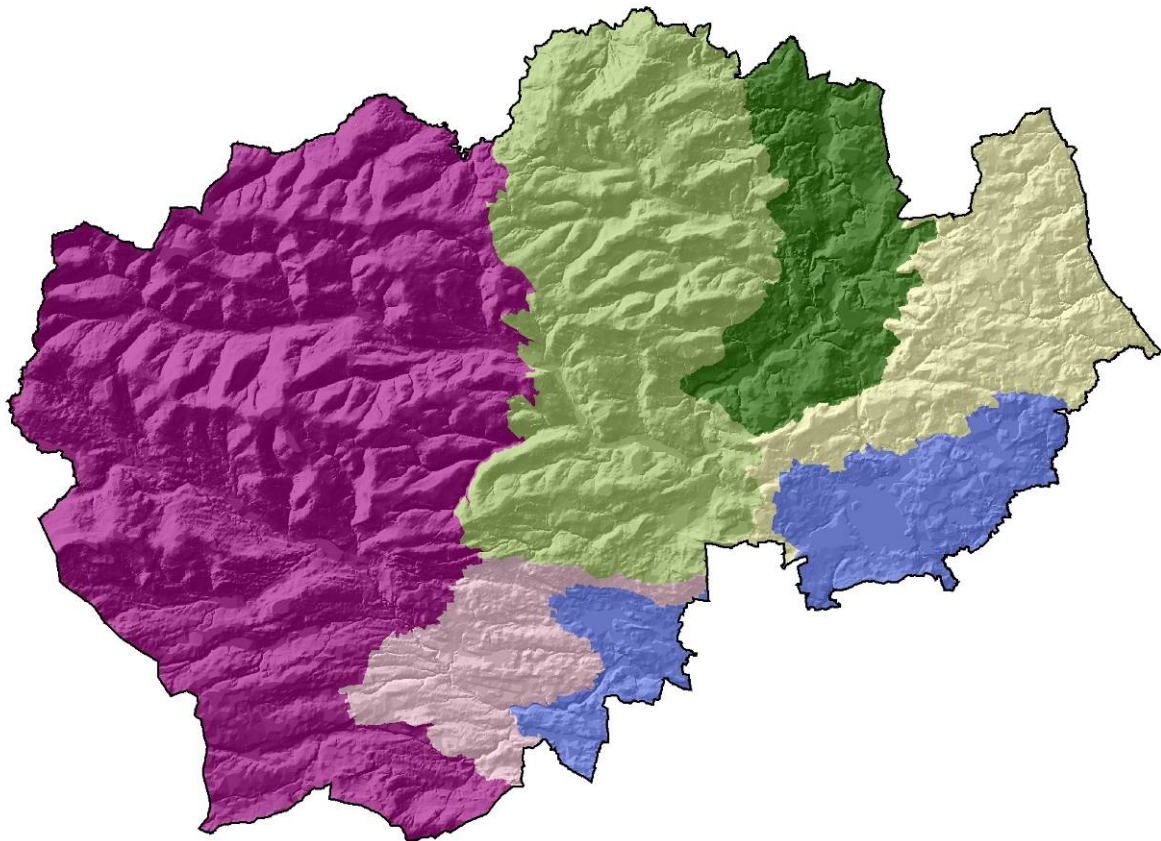
LANDSCAPE CHARACTER
THE LANDSCAPE CLASSIFICATION
TABLE 2: LOCAL LANDSCAPES TYPES

	Valley farmland: wooded estate arable
	Valley farmland: wooded estate pasture
	Valley farmland: wooded pasture
WEAR LOWLANDS	Dene pastures
	Disturbed land
	Floodplain farmland: arable
	Floodplain farmland: pasture
	Heaths and fells
	Infrastructure
	Lowland woods
	Lowland woods: denes & bluffs
	Lowland woods: floodplain & riverside
	Nurseries & market gardens
	Mineral working
	Parkland
	Parks and recreation grounds
	River: middle reaches
	River: tidal reaches
	Terrace farmland: arable
	Terrace farmland: open arable
	Terrace farmland: open pasture
	Terrace farmland: pasture
	Terrace farmland: wooded arable
	Terrace farmland: wooded estate arable
	Terrace farmland: wooded estate pasture
	Terrace farmland: wooded pasture
	Urban
	Valley farmland: open arable
	Valley farmland: open pasture
	Valley farmland: open pasture
	Valley farmland: wooded arable
	Valley farmland: wooded estate arable
	Valley farmland: wooded estate pasture
	Valley farmland: wooded pasture
EAST DURHAM LIMESTONE PLATEAU	Carr farmland: open pasture
	Coastal arable
	Coastal gills & denes
	Coastal grassland
	Coastal plain farmland: pasture
	Coastal plain farmland: wooded arable
	Dene pastures
	Dene pastures (limestone)
	Disturbed land
	Escarpment ridges & spurs: open arable
	Escarpment ridges & spurs: open pasture
	Escarpment ridges & spurs: wooded estate arable
	Escarpment ridges & spurs: wooded pasture
	Escarpment valley farmland: open arable
	Escarpment valley farmland: open pasture
	Escarpment valley farmland: steep pasture
	Escarpment valley farmland: wooded pasture
	Foreshore
	Infrastructure
	Limestone cliffs & clay slopes

LANDSCAPE CHARACTER
THE LANDSCAPE CLASSIFICATION
TABLE 2: LOCAL LANDSCAPES TYPES

	Lowland woods
	Lowland woods: denes & bluffs
	Mineral working
	Parkland
	Parks and recreation grounds
	Plateau farmland: open arable
	Plateau farmland: open pasture
	Plateau farmland: pasture
	Plateau farmland: timbered estate arable
	Plateau farmland: timbered estate pasture
	Plateau farmland: wooded arable
	Sand dunes
	Scarp and dipslope farmland: arable
	Scarp and dipslope farmland: open arable
	Scarp and dipslope farmland: open pasture
	Scarp and dipslope farmland: pasture
	Scarp and dipslope farmland: wooded arable
	Scarp and dipslope farmland: wooded pasture
	Urban
TEES LOWLANDS	Carr farmland: open arable
	Carr farmland: open pasture
	Dene pastures
	Disturbed land
	Floodplain farmland: arable
	Floodplain farmland: pasture
	Infrastructure
	Lakes & ponds
	Lowland reservoirs
	Lowland woods
	Lowland woods: denes & bluffs
	Lowland woods: floodplain & riverside woods
	Nurseries & market gardens
	Mineral working
	Parkland
	Parks and recreation grounds
	Plain farmland: arable
	Plain farmland: open arable
	Plain farmland: open pasture
	Plain farmland: pasture
	Plain farmland: wooded arable
	Plain farmland: wooded estate arable
	Plain farmland: wooded estate pasture
	Plain farmland: wooded pasture
	River: middle reaches
	Urban
	Vale floor farmland: arable
	Vale floor farmland: open arable
	Vale floor farmland: open pasture
	Vale floor farmland: pasture
	Vale floor farmland: wooded estate arable
	Vale floor farmland: wooded estate pasture

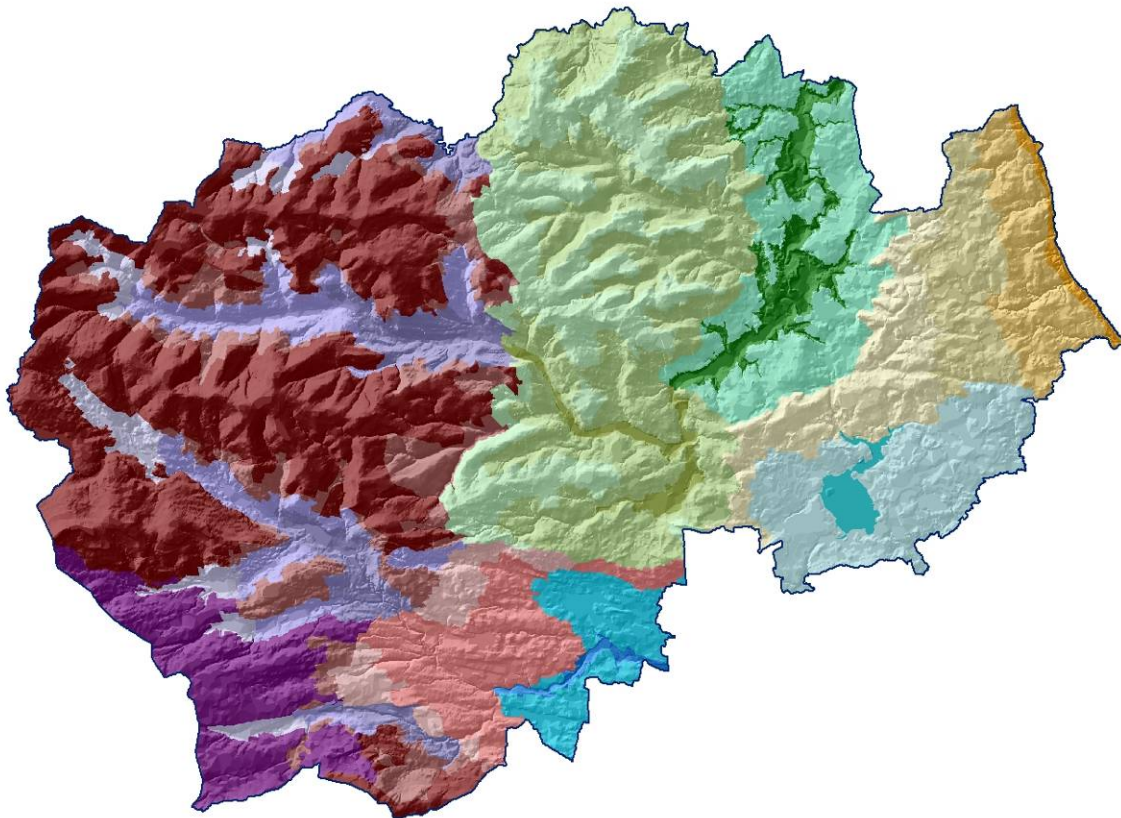
County Character Areas



- East Durham Limestone Plateau
- North Pennines
- Dales Fringe
- Tees Lowlands
- Wear Lowlands
- West Durham Coalfield

Crown Copyright. All rights reserved. Durham County Council LA 100019779 2008

Broad Landscape Types



- | | |
|-----------------------------|---------------------------|
| Moorland Ridges & Summits | Lowland Valley Terraces |
| Moorland Plateau | Incised Lowland Valley |
| Moorland Fringe | Limestone Escarpment |
| Upper Dale | Clay Plateau |
| Middle Dale | Coastal Limestone Plateau |
| Lower Dale | Limestone Coast |
| Gritstone Upland Fringe | Lowland Vale |
| Gritstone Vale | Lowland Carrs |
| Coalfield Upland Fringe | Lowland River Terraces |
| Coalfield Valley Floodplain | Lowland Plain |
| Coalfield Valley | |

Crown Copyright. All rights reserved. Durham County Council LA 100019779 2008